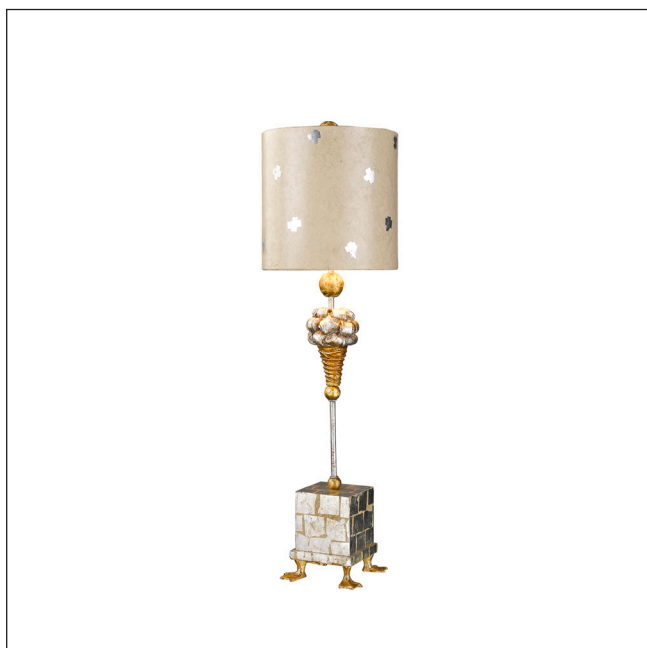


MODEL: Pompadour X 1 Light Table Lamp



The Pompadour X Table lamp has moulded duck feet that support a square silver leaf base. Topped with a Cream and Silver Leaf cylinder shade and a pompadour-inspired finial. LS438

1. Stock Code	FB-POMPADOURX-TL	15. Base Height (mm)	
2. Product Type	Table Lamp	16. Base Diameter (mm)	
3. Family	Pompadour X	17. Base Depth (mm)	
4. Finish	Cream and Silver Leaf	18. Shade Height (mm)	
5. Class	Class I	19. Shade Depth (mm)	
6. Voltage	220-240v 50hz	20. Shade Width (mm)	
7. Max. Wattage	60W	21. Net Weight (kg)	0.1
8. Lamp Holder Type	E27	22. Gross Weight (kg)	3.8
9. No. of Lamps	1	23. Back Plate Height (mm)	
10. Lamp Supplied	No	24. Build Materials	Steel
11. Lumen Output		25. Box Dimensions	30 x 30 x 75.5cm
12. Overall Height (mm)	790mm	26. Barcode	5.02401E+12
13. Overall Height With Shade (mm)		27. Guarantee	general 2 year guarantee
14. Width (mm)	230mm		